

# ROW Trees and You

**Rob Grotty**

**Urban Forestry Program Manager**

CITY OF AUSTIN

***PUBLIC WORKS DEPARTMENT***

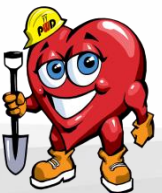
*Austin's Groundbreaking Team*



*Your Department with a Heart!*

# ROW Vegetation Rules

- 14 ft of Clearance Over Road, Curb to Curb
- Sidewalk clear to edge and 8ft high
- Corner vegetation no higher than 2 ft above grade in the area 10 ft in from the curb and 40 ft down the curbline. Some discretion, ensure no sight obstruction exists.



# Code Mandates 14' Clearance Over Road



# Code Restricts Height of Corner Vegetation

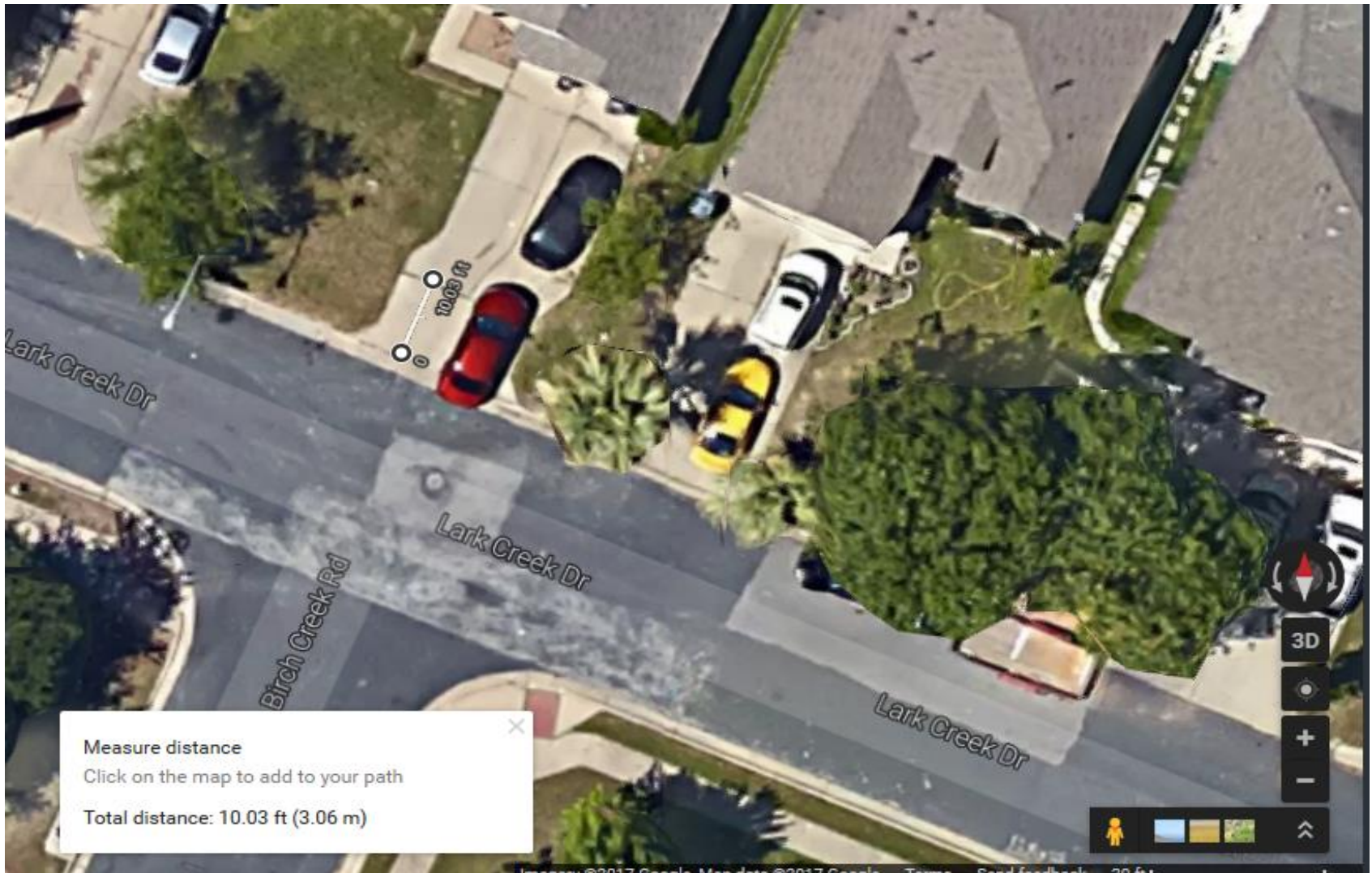


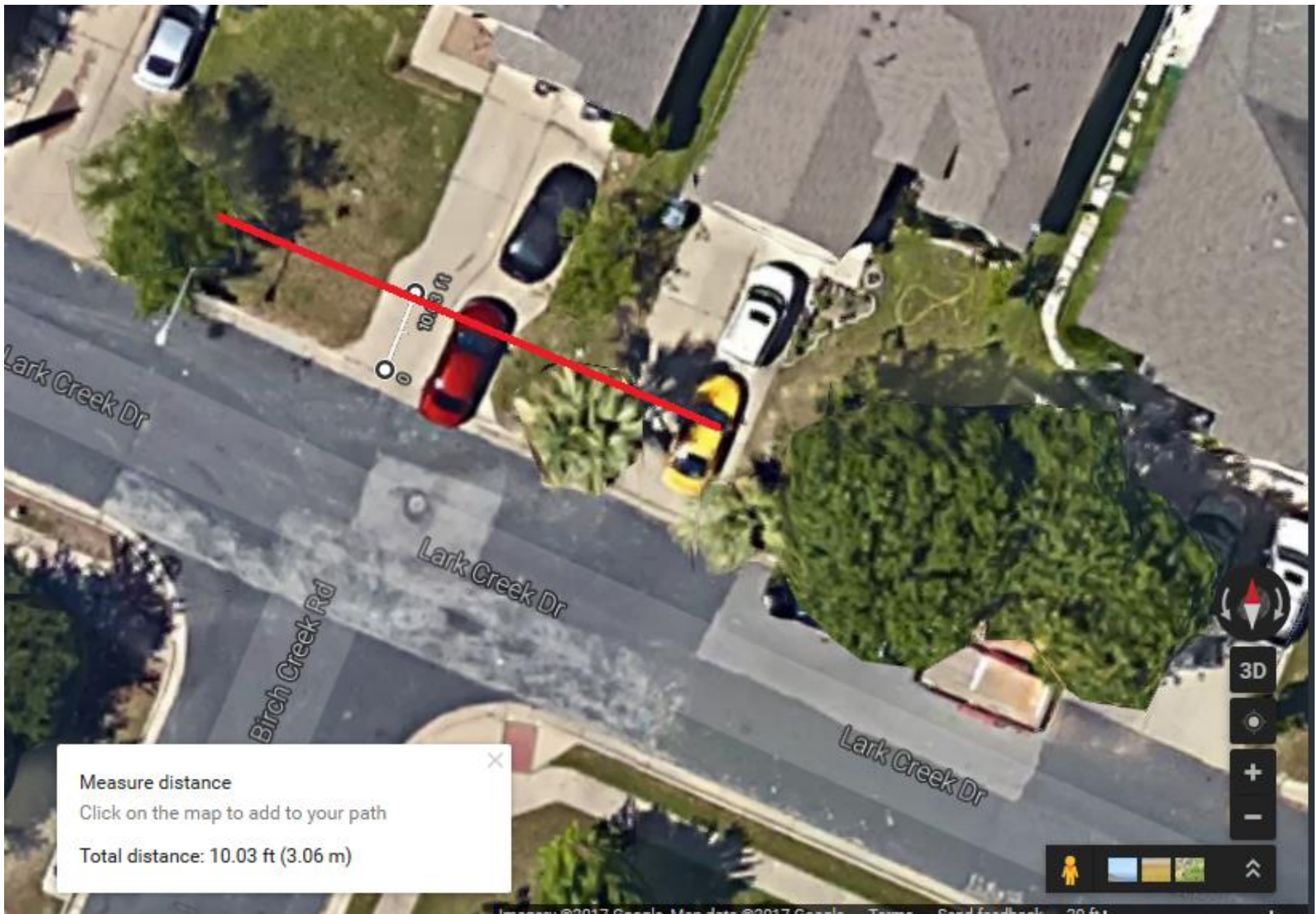
# What's a ROW tree vs a Private Tree?

- ROW trees have at least 2/3rds of their trunk in the ROW, at the ground.
- Typical ROW extends ~10 ft from back of curb towards property, but can vary widely
- City Codes Chapter 6-3



# Driveway Expansion Joint Good Indicator of ROW Line





Measure distance

Click on the map to add to your path

Total distance: 10.03 ft (3.06 m)

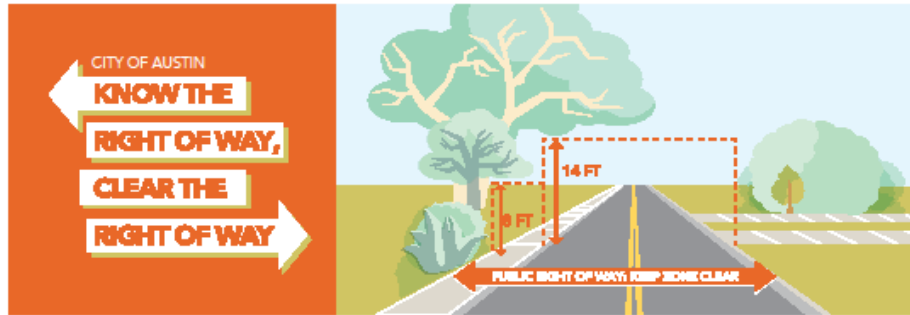
- ROW trees are public property and shall not be pruned by anyone except city crews/contractors without permission.
- Reason is to ensure proper pruning and avoid potential future failures
- Permission can be granted depending on situation and arborist being used
- Email [rob.grotty@austintexas.gov](mailto:rob.grotty@austintexas.gov) with ROW pruning requests. Form on PWD website to come.





- ROW Trees (City's responsibility)
- Private Trees (Property Owner's responsibility)
- Easements, not in ROW  
(Property Owner's responsibility)





## ENHANCING NEIGHBORHOOD SAFETY BY CREATING A SAFE PATHWAY

### KNOW THE RIGHT OF WAY, CLEAR THE RIGHT OF WAY

To protect public health and safety, it is important to keep streets, sidewalks, bicycle lanes and other public areas free of overgrown vegetation. Green spaces transform the city and provide many benefits that influence the health and well-being of our community. Property owners, both public and private, need to be conscious about managing vegetation on their property to address visibility and safety concerns.

It is important to meet the standards below and keep the following areas free of obstructions:

#### Sidewalks

For a clear pathway, keep tree limbs and vegetation trimmed back from the edge of the sidewalk and at least **8 feet above sidewalks.**

#### Streets/Alleys

Keep tree limbs and vegetation trimmed back from the edge of the street or alley and at least **14 feet above streets, bicycle lanes and alleys.**

#### Effective ways to enhance neighborhood safety:

- Trim trees and vegetation to increase safety for pedestrians, cyclists and vehicles.
- Maintain care and health of the trees on your property. Well-maintained trees provide shade, improve air quality and keep Austin looking beautiful!
- Dial 3-1-1 to request care for trees in the public right of way.

### KNOW THE RULES

#### Property Owner Responsibility

Property owners are responsible for the care and maintenance of trees, plants and grass on private property. Overgrown trees and plants can pose a threat when they block the path or view of traffic signs, signals, fire hydrants, vehicles and people. Prune trees and trim or remove any vegetation that blocks the pathway of sidewalks, streets, alleys, bicycle lanes and trails. Keep in mind, the strip of land between the street and sidewalk is public property but the maintenance of vegetation (with the exception of trees) is the property owners' responsibility. Trees in the public right of way are maintained by the City of Austin.

#### City Responsibility

The public right of way includes streets, sidewalks and alleys. This land is public property and is owned by the City of Austin. It typically extends 10 feet back from the edge of a street, but can vary across the City. While property owners are responsible for mowing the grass and maintaining vegetation that grows in the public right of way, the trees that grow in this area belong to the City and are maintained by trained crews. If a tree growing in the public right of way is in need of maintenance, dial 3-1-1 to report the tree.

*Promoting a safe, clean, visible, walkable, rideable and healthy community.*



[austintexas.gov/cleartherow](http://austintexas.gov/cleartherow)



# Lastly, just for fun...



*Your Department with a Heart!*

# Questions??

**Rob Grotty**  
**(512) 974-9198**

**[rob.grotty@austintexas.gov](mailto:rob.grotty@austintexas.gov)**

CITY OF AUSTIN

***PUBLIC WORKS DEPARTMENT***

*Austin's Groundbreaking Team*



*Your Department with a Heart!*